

4-23-2001

## Monitor Newsletter April 23, 2001

Bowling Green State University

Follow this and additional works at: <https://scholarworks.bgsu.edu/monitor>

---

### Recommended Citation

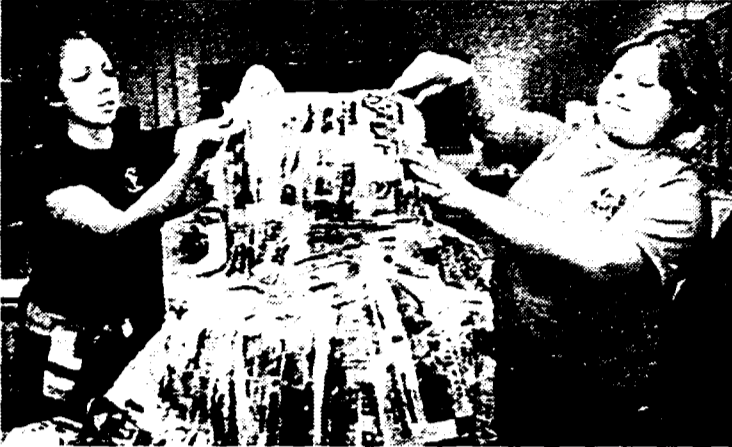
Bowling Green State University, "Monitor Newsletter April 23, 2001" (2001). *Monitor*. 626.  
<https://scholarworks.bgsu.edu/monitor/626>

This Book is brought to you for free and open access by the University Publications at ScholarWorks@BGSU. It has been accepted for inclusion in Monitor by an authorized administrator of ScholarWorks@BGSU.

# MONITOR

VOL. 25 NO. 36 ◆ APRIL 23, 2001

## Visions of suburbia



Graphic design majors Cheri Charlton, left, a sophomore from Wooster, and Suzie Caravella, a freshman from West Lake, apply papier mâché strips to a milk jug topiary which will be part of the miniature golf course BGSU art students are creating inspired by media and film images of suburbia. Golfers of all ages are welcome to play the 14-hole, fully operational course, located in front of the Fine Arts Center. The course will be open to the public, free of charge, on Thursday (April 26) from 4 p.m. to dusk and again on Friday (April 27) from 10 a.m. to 4 p.m. (The rain dates are May 3 and 4.)

## Lively O-Reg activities planned

Students and parents attending Orientation & Registration this summer will get to experience the same marketing phenomenon they observe in movie theaters, according to Amy O'Donnell, assistant dean of students for orientation in the Office of Student Life. Instead of reading about entertainment trivia before the main attraction begins, O-Reg guests will read about BGSU departments and the services they offer.

"O-Reg Announcements," an ongoing PowerPoint presentation developed by Drew Tinnin, student life, will run in 101 Olscamp Hall before any major programs or meetings begin. Any University department wishing to promote its programs or services may be included in the presentation. Log onto the O-Reg Web site at [www.bgsu.edu/offices/sa/getinvolved/oreg/deptpart.html](http://www.bgsu.edu/offices/sa/getinvolved/oreg/deptpart.html) to find out how to participate in the PowerPoint presentation, display area, or information packet options, or contact Tinnin at 2-9317 or at [atinnin@bgnet.bgsu.edu](mailto:atinnin@bgnet.bgsu.edu) by May 4.

### Technology boost

Entering students will also be exposed to some new technology in the reservations and data-retrieval areas. This year's entering students and their parents and guests will reserve their O-Reg date using "Scantron" technology developed by Joyce

Brady and Annette Reazin, Information Technology Services. Deb Helm, Office of Campus Involvement and O-Reg reservations coordinator, researched the needs of the O-Reg program, the colleges and many other academic support areas on campus to determine a system that would provide all areas with access to the data they require to prepare for the arrival of new students this summer. The result will be a reservations system that is both timely, efficient and information-rich, O'Donnell predicted.

### Fall welcome extended

Also new to New Student Orientation this year is the Fall Welcome program. After several meetings of the campus-wide Welcome Week Task Force, recommendations have been forwarded and approved by the president's Cabinet. Among the recommendations is the extension of the existing, week-long program to one that is five weeks in length and inclusive of all students, not just new students. Programming will take place between Aug. 25 and Sept. 29.

Extending the program will yield several benefits, including the opportunity for University departments and student organizations to host welcome programs for students, and a more appropriate time frame to offer programs that are consistent

(Continued on back)

## President announces selective hiring freeze

In light of the continuing uncertainty over funding for higher education as the state budget negotiations in Columbus drag on, President Sidney Ribeau has announced a selective hiring freeze for classified and administrative staff positions at BGSU effective April 20.

As the economic picture for Ohio becomes more problematic, and with the state Supreme Court lawsuit on K-12 funding hanging over the legislature, Ribeau said he felt taking preemptive steps now could help avert more serious measures in the future and allow the University to continue to move forward.

Instructional positions are not affected by the freeze. It is imperative that BGSU protect its "core business" of teaching students, the president said.

During the selective hiring freeze for administrative and classified positions:

- No new positions or replacement positions will be filled automatically.
- All requests for exceptions to the hiring freeze will be considered on a case-by-case basis by the president. Requests must be initially submitted in writing to the area vice president and should address such issues as: whether the position supports instruction or critical student services, generates revenue, is grant-funded or is essential to campus health or safety.
- Searches currently in progress and new searches are equally affected.
- Areas currently interviewing candidates should complete that process but no offers may be extended to candidates without following the approval process; areas that have an adver-

tisement posted should not schedule interviews without approval; areas that have recently requested a posting should not expect the position to be advertised without approval.

• Departments may not fill vacant permanent positions with student employees or temporary full- or part-time employees. Any exceptions to this guideline require the approval of the area vice president.

During this time, the president urges the campus community to conserve resources as much as possible without compromising the quality of essential student services and education. Any dollars that departments can save by reducing discretionary spending will be available to help them fund their mission-critical activities.

Ribeau predicted the freeze will last at least until the beginning of the new fiscal year on July 1. The court-imposed deadline for resolving the K-12 funding case is June 15, which could have an effect on the total budget timeline.

As to University salary increases, it is anticipated that those decisions will be made at the next board of trustees meeting on June 29.

Ribeau called on the BGSU faculty and staff to unite to see the University through this difficult time. With patience and goodwill, he said, BGSU will manage the situation as successfully as possible.

## Mruk, May honored by BGSU Firelands

Two members of the BGSU Firelands faculty have received the college's 2000-2001 Distinguished Teaching Awards.

Chris Mruk, psychology, won the full-time faculty award, and Tammy May, biology coordinator, received the award for part-time faculty.

The two were honored at a recognition banquet on April 20.

"Teaching is at the heart of BGSU Firelands. Tammy and Chris are well-deserving of this important recognition. They represent the best of our faculty's commitment to excellence in teaching," said William Balzer, interim dean.

## O-Reg dates 2001

June 25-28  
July 2 and 5  
July 9-12  
July 16-19  
July 23-24

There is one final, fall first-year student O-Reg program on Aug. 23. Transfer student O-Reg dates are June 21, July 26, August 21 and 22. More information about these programs will be available on the Web site.

## campus calendar.....

**Tuesday, April 24**

Tuba and Euphonium Ensemble, directed by Velvet Brown, 8 p.m., Bryan Recital Hall, Moore Musical Arts Center.

**Wednesday, April 25**

Brown Bag Luncheon, "Protecting Yourself from Consumer Fraud," with Amy Smalling, consumer education specialist, noon, 107 Hanna Hall.

Musical Program, "New Works for Children: A Cross-Cultural Partnering of Youth Music Ensembles," featuring performers from Toledo elementary schools and BGSU College of Musical Arts, 6:30 p.m., Kobacker Hall, Moore Musical Arts Center.

Faculty Artist Series, featuring tenor Christopher Scholl, mezzo-soprano Ellen Strba, pianist Virginia Marks and assisting clarinetist Kevin Schempf, 8 p.m., Bryan Recital Hall.

World Percussion Night Performance, featuring BGSU Afro-Caribbean Ensemble, directed by Steve Cornelius, 8 p.m., Kobacker Hall.

**Friday, April 27**

BGSU Men's Chorus, directed by Graeme Cowen, 8 p.m., Kobacker Hall. Tickets are \$7 for adults and \$5 for students and seniors, for tickets call 2-8171.

**Saturday, April 28**

BGSU Concert Band and University Bands, directed by Hubert Toney Jr. and Charles Neal, 8 p.m., Kobacker Hall.

**Sunday, April 29**

Bowling Green Philharmonia, directed by Emily Freeman Brown, featuring soprano Sedalia Brown, 3 p.m., Kobacker Hall.

**Continuing Events**

**Through April 25**

Photography Exhibit, "The Triumphant Spirit," portraits

and stories of Holocaust survivors by BGSU alumnus Nick Del Calzo, McFall Gallery. Gallery hours are Monday-Friday, 9 a.m.-5 p.m., and Sunday, April 22, 1-4 p.m.

**Through April 25 and April 29- May 5**

MFA/BFA Senior Thesis Exhibitions, Dorothy Uber Bryan and Willard Wankelman galleries, opening reception on April 28, 7-9 p.m. Gallery hours are Tuesday-Saturday, 10 a.m.-4 p.m., and Sunday, 1-4 p.m.

**April 26-28**

BGSU Firelands College Theatre Presentation, "The Man Who Wanted Seven Wives (The Greenbrier Ghost and Famous Murder Mystery of 1897)," adapted and directed by Frank Glann, 8 p.m. April 26-28, 2:30 p.m. April 29, McBride Theatre, BGSU Firelands. For tickets call the Firelands box office at (+19) 433-9969.

Spring Public Art Project, "Visions of Suburbia," miniature golf course created by BGSU art students, open from 4 p.m.-dusk April 26 and 10 a.m.-4 p.m. April 27 (rain dates May 3-4), Fine Arts Center. Free.

**April 27-29**

Treeshouse Troupe Children's Theatre, "Step on a Crack," by Susan Zeder, and "Tales of Hans Christian Anderson," adapted by E. Scott Regan, theatre, April 27-28, 7:30 p.m. and April 29, 2 p.m., Joe E. Brown Theatre. All seats \$5. For tickets call 2-2719.

**April 29-30**

Open Auditions for child and adult roles in the BGSU Summer Musical Theater production of "The King and I," 6-8 p.m. (children) and 8-10 p.m. (adults), Kobacker Hall. The show is scheduled for July 13-14, July 20-21 and Sept. 7-8. For more details, contact Eugene Dybdahl at 2-8623.

## job postings.....

**FACULTY**

Early Childhood Studies. Lecturer (two positions). Call the dean's office, 2-7403. Deadline: May 20.

Management. Instructor (two positions). Call Ed Duplaga, 2-2946. Deadline: April 25.

**CLASSIFIED**

**ADMINISTRATIVE**

Due to the just-announced hiring freeze for classified and administrative staff, there will be no job postings in these areas.

### Future teachers meet potential employers

Recruiters from about 150 school districts, from more than a dozen states, are expected to be on campus to interview prospective teachers today (April 23). BGSU's 16th annual Teacher Job Fair is the largest education employment fair of its kind in Ohio. Nearly 400 BGSU students and alumni are signed up to take part. Approximately 1,500 interviews are scheduled during the day-long event.

Nonprofit Organization  
U.S. Postage  
PAID  
Permit No. 1  
Bowling Green, Ohio

BGSU is an AA/EEO educator and employer.

## in brief

### 'Invest in Yourself' at seminar

The campus community is invited to attend a free professional development program sponsored by the Administrative Staff Council.

Open to all BGSU faculty, staff and students, "Invest in Yourself" will run from 8:30 a.m. to noon on Thursday (April 26) in Olscamp Hall. Participants can choose from three options in each of two time frames.

Topics included and their presenters are "Rethinking How Stress Affects Your Overall Wellness" with Lori Wilmarth-Dunn, Ph.D., owner of LifePaths; "Deciding and Communicating Effectively" with Bonnie Fink, English; "Generational Perspectives and How to Better Manage and Mentor Individuals" with Kate Augustine, coordinator of internal training and development; "Defining Personal Values, Your Guiding Force" led by Willmarth-Dunn; "Going Back to the Basics of Customer Service" with Catherine Pratt, assistant to the dean for college relations, College of Business Administration, and "Communicating Cross-Culturally and Across Gender" with Barbara Waddell, director of diversity initiatives, and Bettina Shuford, director of multicultural and academic initiatives.

For more information or to

register call Continuing Education, International & Summer Programs, 2-8181.

### Admin. staff to meet with HR reps

All administrative staff members are invited to attend an informational meeting next week.

Human Resources representatives will discuss aspects of compensation for administrative staff, including pay ranges and salaries, job analysis questionnaires (JAQ's) and their re-evaluation, how to begin the process of requesting a JAQ review, the appeal process and more.

The meeting will be held from 8:30-10:30 a.m. on May 1, in 101 Olscamp Hall. There will be a separate meeting time for Firelands administrative staff.

### Test scanning hours extended

ITS will extend the test scanning hours for final exams to include Saturday morning, May 12, from 8 a.m. to noon. Participants should bring their National Computer System answer sheets to 301 Hayes Hall.

The window at 301 Hayes is open during the noon hour every weekday. During finals week, the window will be open until 6 p.m. Monday-Friday.

### O-Reg activities (Continued)

with the students' readiness to hear the messages delivered. For example, workshops on study skills will be more timely a few weeks into the semester than before classes have begun.

Among the steps taken to give Fall Welcome a greater academic flavor is the naming a faculty person to co-chair the Fall Welcome. Neal Jesse, political science, will co-chair the events with O'Donnell and Fall Welcome Coordinator Rachel

Powell. Departments interested in planning an event for new or returning students during the five-week Fall Welcome should contact Powell at [rpowell@bgnet](mailto:rpowell@bgnet) or 2-2843.

[www.bgsu.edu/faculty\\_staff/](http://www.bgsu.edu/faculty_staff/)

**Monitor**  
.....  
**online**