

Spring 3-21-2001

## The Cambridge Food Histories: The Long and Short of Them

Ken Kiple  
*Bowling Green State University*

Follow this and additional works at: [https://scholarworks.bgsu.edu/ics\\_fellow\\_lectures](https://scholarworks.bgsu.edu/ics_fellow_lectures)

---

### Recommended Citation

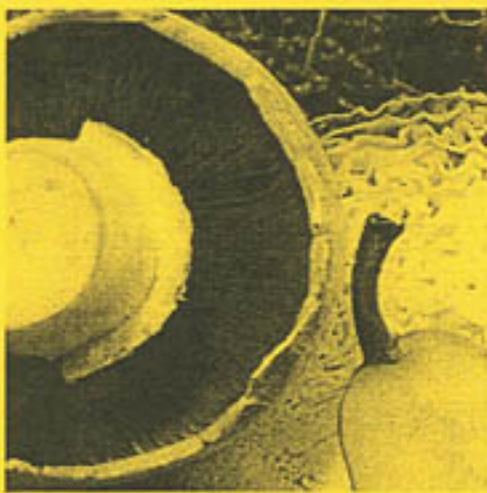
Kiple, Ken, "The Cambridge Food Histories: The Long and Short of Them" (2001). *ICS Fellow Lectures*. 40.  
[https://scholarworks.bgsu.edu/ics\\_fellow\\_lectures/40](https://scholarworks.bgsu.edu/ics_fellow_lectures/40)

This Book is brought to you for free and open access by the Institute for the Study of Culture & Society at ScholarWorks@BGSU. It has been accepted for inclusion in ICS Fellow Lectures by an authorized administrator of ScholarWorks@BGSU.

# **“The Cambridge Food Histories: The Long and Short of Them” a talk by Ken Kiple**

**Professor of History and Fellow at ICS**

Ten thousand years of food globalization connects the past to the present. Professor Ken Kiple's talk illustrates the origins of food globalization in the early Neolithic period, exploring how this globalization continues in history. He also explores the impact technological advances have had on human health while accelerating globalization.



Dr. Kenneth Kiple is currently a Fellow at the Institute for the Study of Culture and Society, where he is working on a book tentatively entitled, "Food and Nutrition in History." He has been a Distinguished University Professor since 1994 and a History Professor for thirteen years. His book and collections include: THE CAMBRIDGE WORLD HISTORY OF FOOD; BIOLOGICAL CONSEQUENCES OF THE EUROPEAN EXPANSION, 1450-1800; THE CAMBRIDGE WORLD HISTORY OF HUMAN DISEASE; THE AFRICAN EXCHANGE: TOWARD A BIOLOGICAL HISTORY OF BLACK PEOPLE; THE CARIBBEAN SLAVE: A BIOLOGICAL HISTORY; and ANOTHER DIMENSION TO THE BLACK DIASPORA: DIET, DISEASE AND RACISM.



**Wednesday  
March 21, 2001  
Business  
Administration 110  
2:30 - 3:20 pm**



All Events are Free and Open to the Public. For further information please call The Institute for the Study of Culture and Society at (419) 372-0585